



DATASHEET

-Preliminary-

Surface Acoustic Wave Filter

- **Application : BAND38(50MHz) Tx Filter**
- **Model : SFDG26BQ102**
- **Center Frequency : 2595 [MHz]**



WISOL CO., LTD.

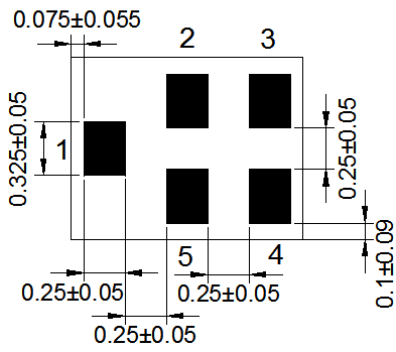
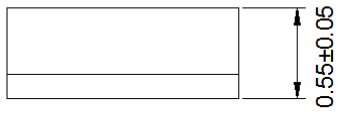
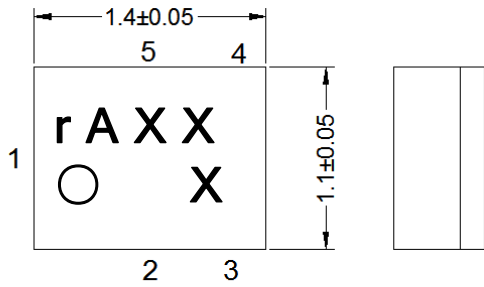
373-7, GAJANG-DONG, OSAN-SI
GYUNGGI-DO, KOREA, 447-210

<http://www.wisol.co.kr>

E-mail: sales@wisol.co.kr

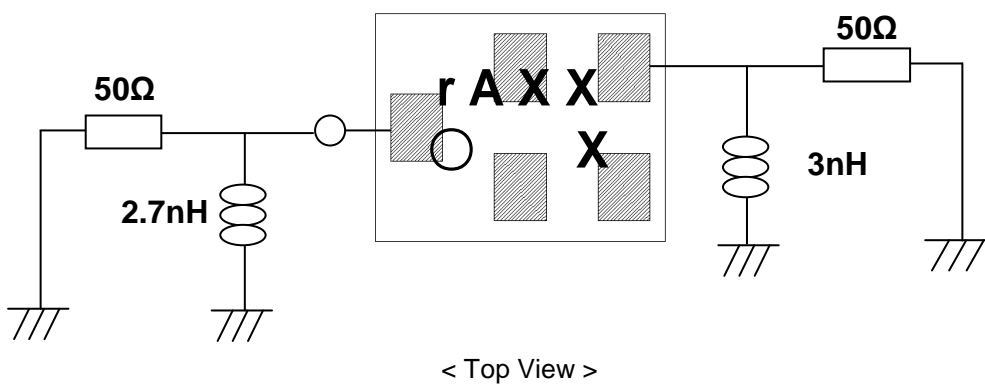
1. OUTLINE DRAWING & RECOMMENDED PCB

[Unit: mm]



No.	Function
2, 3, 5	Ground
1	Unbalanced Input
4	Unbalanced Output

2. TEST FIXTURE



3. PERFORMANCE

3-1. MAXIMUM RATINGS

CHARACTERISTICS	RATINGS	UNITS
DC Permissive Voltage	5	V
Maximum Input Power	28	dBm
Operating Temperature Range	- 20 ~ +85	°C
Storage Temperature Range	- 40 ~ +85	°C

3-2. ELECTRICAL CHARACTERISTICS

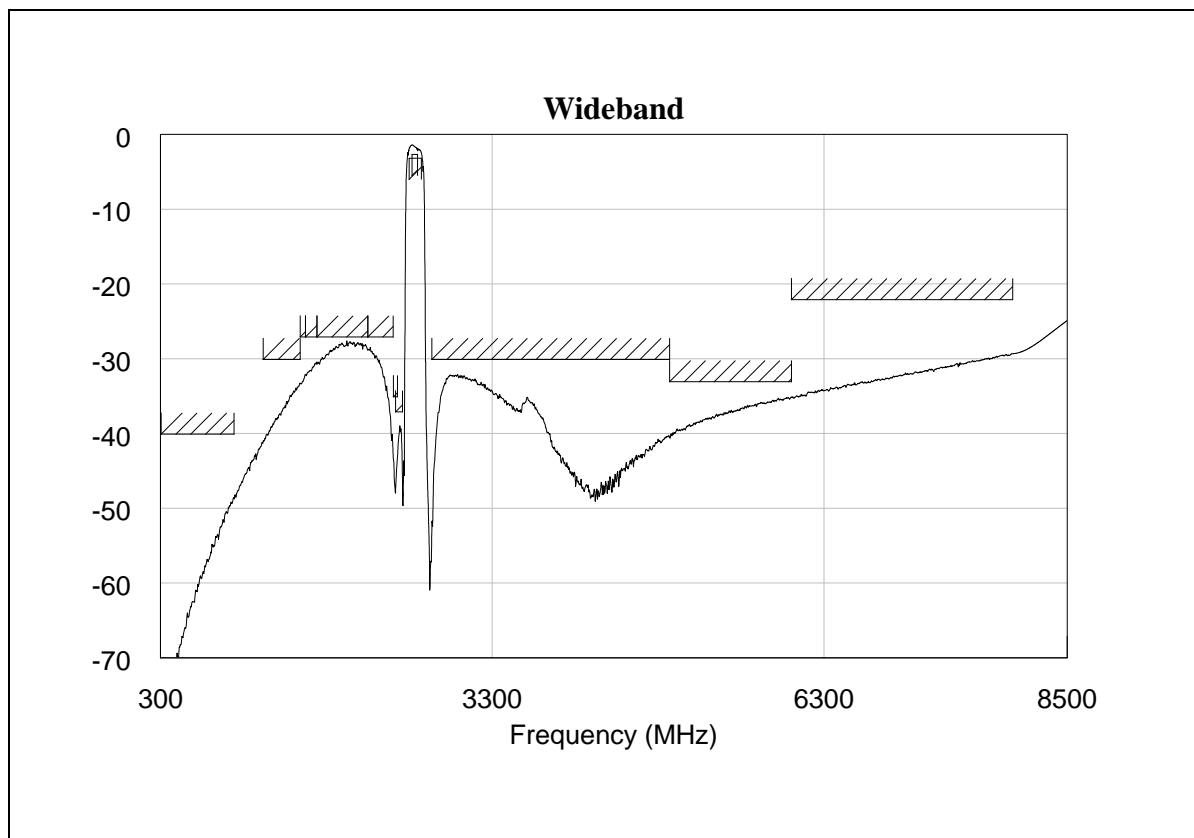
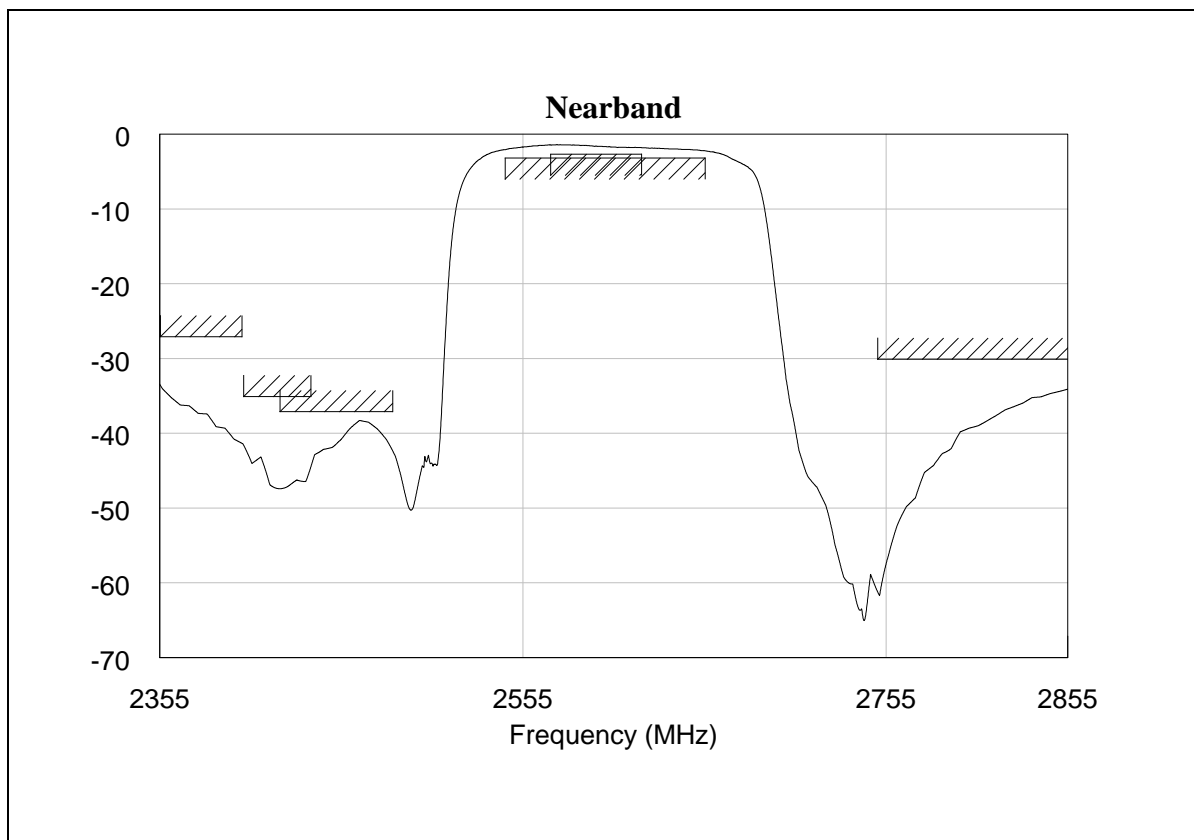
3-2-1. TABLE

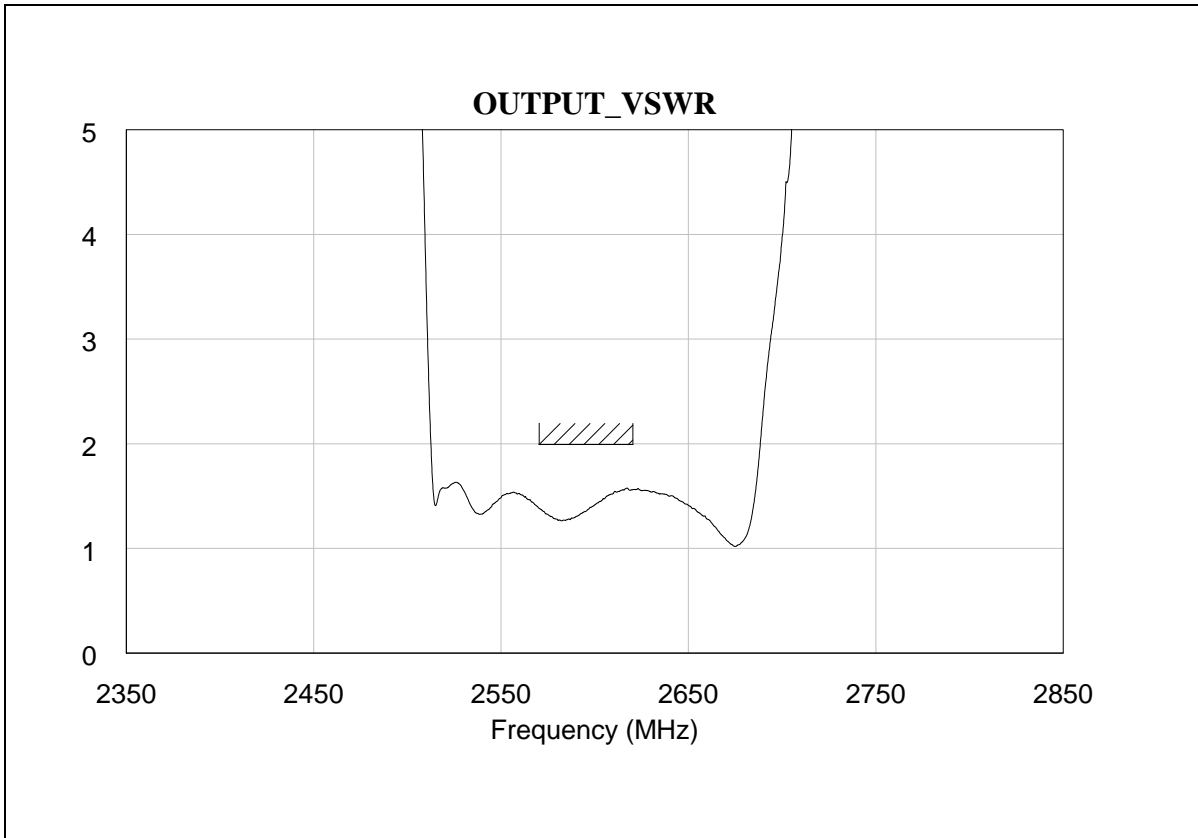
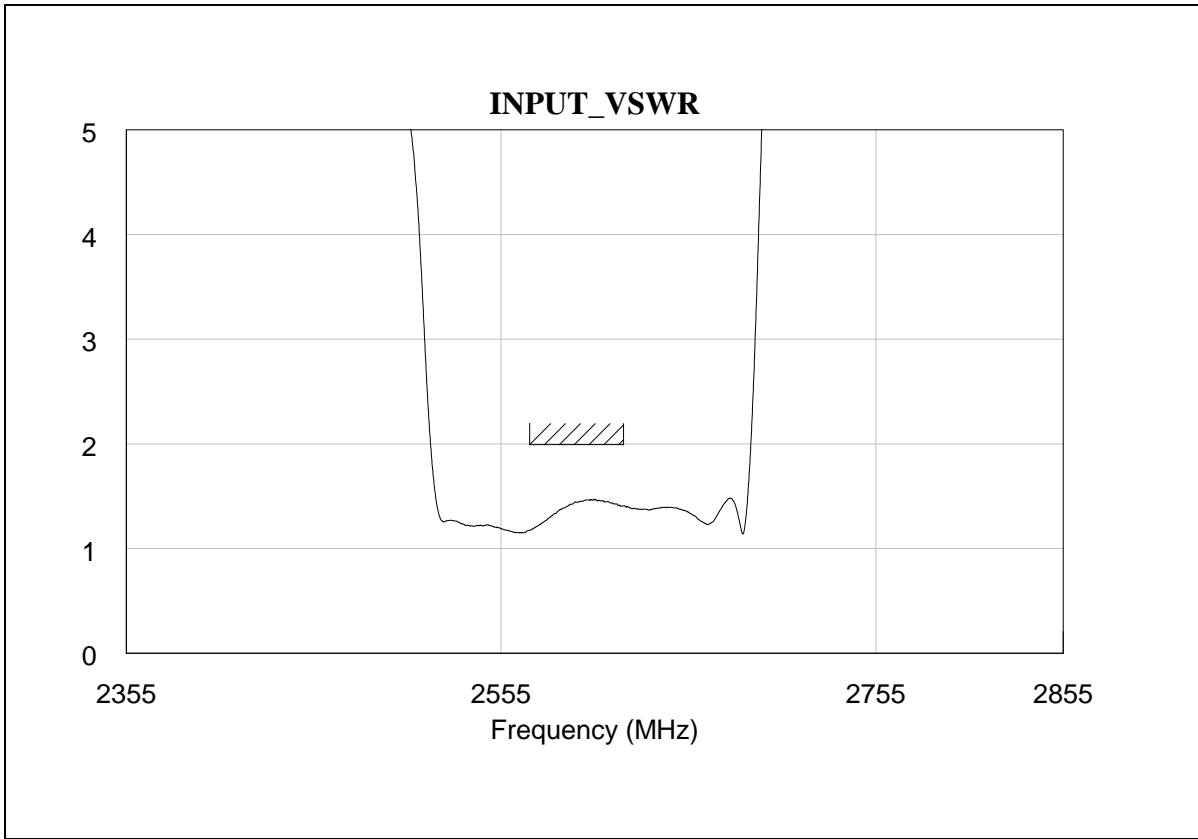
Ta = - 20 ~ + 85 °C

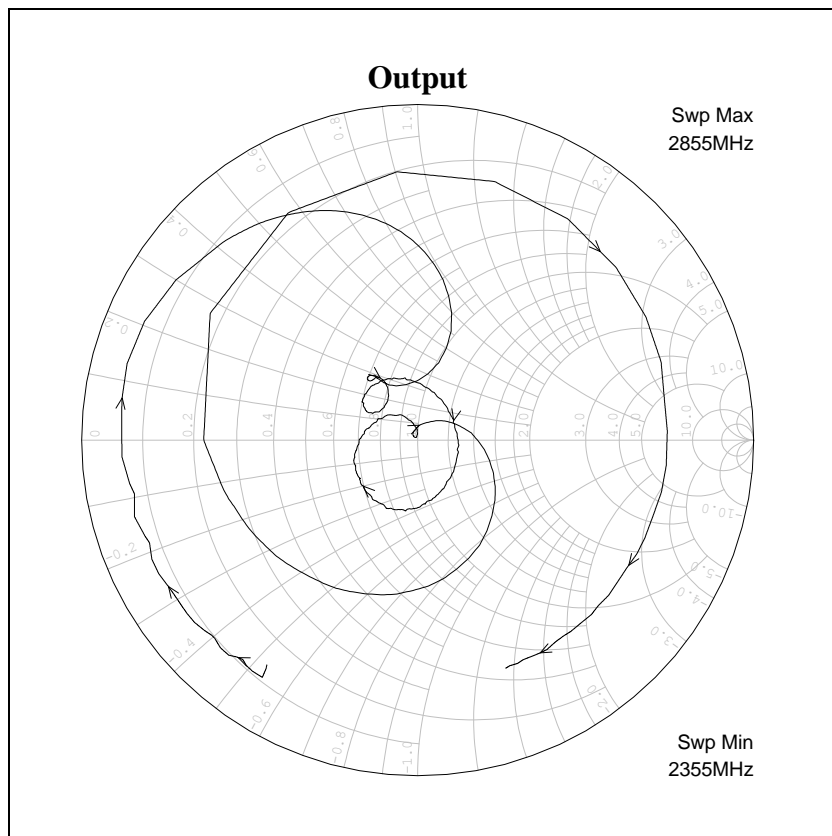
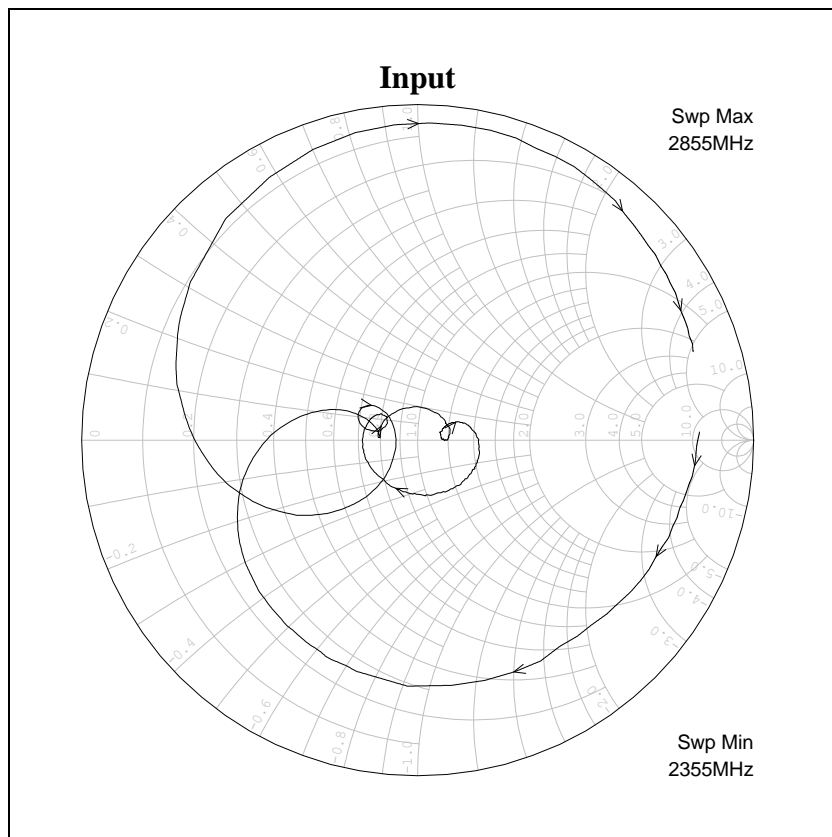
Item	FREQUENCY RANGE [MHz]	UNIT	SPECIFICATION		
			Min.	Typ.(25°C)	Max.
Insertion Loss	2570 ~ 2620	dB		1.8	2.5
	2545 ~ 2655*	dB		2.2	3.1
Inband Ripple	2570 ~ 2620	dB		0.6	1.5
Input VSWR	2570 ~ 2620	-		1.5	2.0
Output VSWR	2570 ~ 2620	-		1.5	2.0
Absolute Attenuation	10 ~ 960	dB	40	50	
	1225 ~ 1559	dB	30	35	
	1559 ~ 1606	dB	27	34	
	1606 ~ 1710	dB	27	32	
	1710 ~ 2170	dB	27	29	
	2170 ~ 2400	dB	27	29	
	2401 ~ 2438	dB	35	42	
	2421 ~ 2483	dB	37	39	
	2750 ~ 4900	dB	30	33	
	4900 ~ 6000	dB	33	35	
6000 ~ 8000	dB	22	29		
Termination Impedance			Input: Unbalanced 50Ω // 2.7[nH] Output: Unbalanced 50Ω // 3.0[nH]		

* Band41 Frequency Range

3-2-2. GRAPH



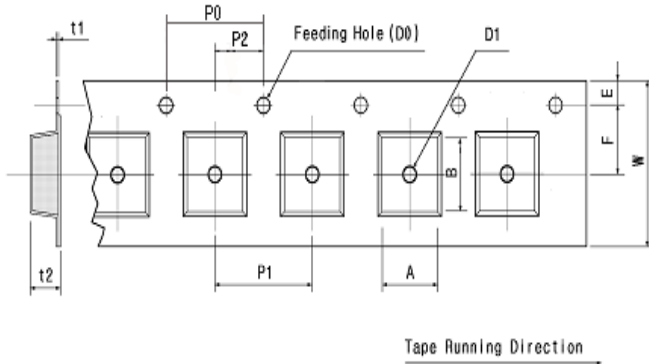




4. PACKING

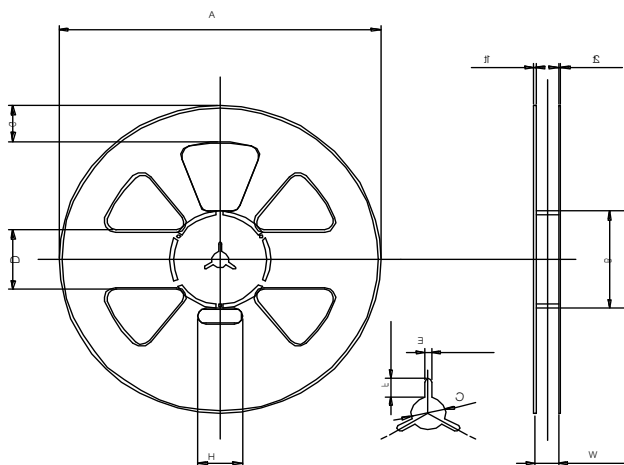
4-1. DIMENSIONS

- Carrier Tape [Unit: mm]



A	B	D0	D1
1.30	1.60	Ø1.50	Ø0.6
+ 0.05	+ 0.05	+ 0.10	MIN
- 0.05	- 0.05	- 0.00	
E	F	P0	P1
1.75	3.50	4.00	4.00
+ 0.10	+ 0.05	+ 0.10	+ 0.10
- 0.10	- 0.05	- 0.10	- 0.10
P2	t1	t2	W
2.00	0.25	0.70	8.00
+ 0.05	+ 0.05	+ 0.05	+ 0.10
- 0.05	- 0.05	- 0.05	- 0.10

- Reel [Unit: mm]



A	B	C	D
Ø258.0	Ø81.0	Ø13.0	50.0
+1.0	+1.0	+0.5	+0.8
-0.5	-1.0	-0.5	-0.8
E	F	G	H
2.2	7.0	30.0	35.0
+0.3	+0.5	+0.8	+1.0
-0.3	-0.5	-0.8	-1.0
t1	t2	W	
1.8	1.5	9.0	
+0.5	+0.5	+1.0	
-0.5	-0.5	-0.5	

- The product shall be packed properly not to be damaged during transportation and storage.

4-2. REELING QUANTITY

10 inch reel: 8,000 pcs/reel

4-3. TAPING STRUCTURE

The tape shall be wound around the reel in direction shown below.

